

# CO2 Galvo

## Laser Marker

A CO<sub>2</sub> galvo laser machine is a high-speed marking and engraving system designed for precision on non-metal materials. Using galvanometer mirrors instead of moving gantries, it delivers ultra-fast marking, crisp detail, and repeatable accuracy on wood, leather, acrylic, rubber, glass, and coated surfaces.

**60 Watts**  
CO2 Laser Power Included

**LENS**  
F = 160mm Lens 110x110mm  
F = 290mm Lens 200x200mm  
(Optional Upgrade)

**2 YEAR**  
**WARRANTY**  
INDUSTRY LEADING

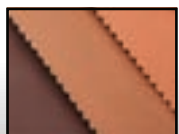
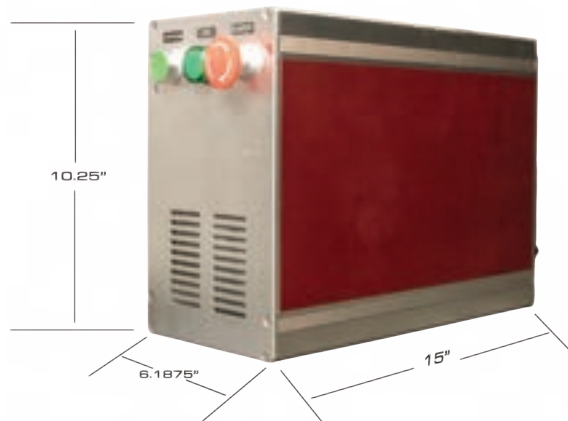
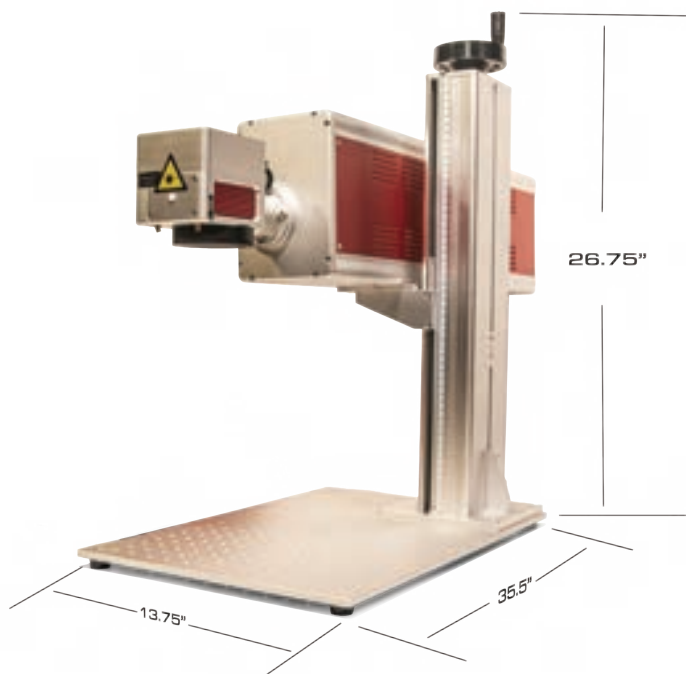
### CO2 GALVO LASER INCLUDES:

- 60 Watts CO2 Laser Power Included
- F = 160mm lens - 110mm x 110mm
- F - 290mm lens - 200mm x 200mm (optional upgrade)
- Ez Cad or LightBurn Pro Software
- Reliable Speed & Precision - Approx. 20,000 Hours
- Tech Support For Life Via. BOSS' In-House Laser Tech's And Engineers
- Warehoused Replacement Parts & Accessories For Quick Replacement

- Warranty - 2 Year Parts Includes Fiber Laser
- We 100% Guarantee With Our 30-Day Guarantee Return Policy



Includes an F=160mm lens with a 110 x 110mm marking area for compact applications. For users who need a larger marking field, an optional F=290mm lens upgrade is available, expanding the area to 200 x 200mm."



Leather



Paper



Acrylic



Glass



Wood



Ceramic/Tile

**AND  
MUCH  
MORE**

**SPECIFICATIONS**

Type	CO2 Galvo	Laser Source	60W RF Laser
Power Requirements	110v AC / 60Hz, single-phase	Laser Wavelength	10.6 $\mu$ m
Machine Dimensions	Machine - 901.7mm x 349.25mm x 679.45mm (35.5" x 13.75" x 26.75" Console - 381mm x 157.16 mm x 260.35mm (15" x 6.1875" x 10.25")	Beam Quality	M <sup>2</sup> < 1.2
Max Marking Speed	10,000mm/s	Net Weight	Machine - 63 lbs. Console - 17.5
Laser	Galvo Scanner	Life Span	Approx. 20,000 working hours
Class	Class IV Laser	Operator Interface	Windows
Position Accuracy	$\pm 0.002$ mm	Programs Used	EZCad Lite 2.14.16 & LightBurn Pro
Laser Output	75 - 80W	Pulse Frequency	0 - 25kHz
Beam Divergence	7.5 $\pm$ 0.5mrad	Minimum Marking Line Width	0.1mm
Beam Size at Exit	1.8 $\pm$ 0.2mm	Minimum Character Height	0.15mm
Electrical Protection Rating	IP54 (Marking Head) IP20 (Laser Unit)	Control System Type	BJJCZ Board; LMCV4-DIGIT