



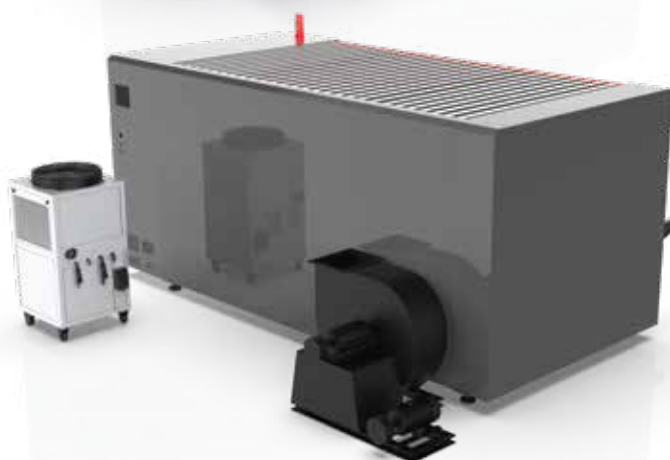
**1KW-6KW**  
**FIBER LASER POWER OPTIONS**  
**BOSS Ion or IPG Laser Source**

**CYPCUT LASER**  
**SOFTWARE INCLUDED**

**INDUSTRY LEADING**  
**2 YEAR**  
**WARRANTY**

### **FC ELITE-MAX INCLUDES:**

- 1KW Fiber Laser Power Included. Upgrade up to 6KW Fiber Laser Power
- ALL 3 Axis (X, Y, & Z) Ball Screw + Double HiWinn Rails For Max Precision (New! Dual Y- AXIS)
- Elite-Max™ Adds Premium Components For Extreme Precision
- Yaskawa Servo Motors & Drivers
- Aviation Grade 6061-T6 Aluminum Gantry
- Convenient Machine Mounted Monitor W/ Windows 10 PC
- CypCUT Laser Cutting Control Software
- Designed & Engineered In USA By Boss Laser
- Two (2) Days On-Site Installation & Training.
- Industrial Fiber Laser Chiller
- New SawTooth Blade Cutting Platform
- Quality Management System (QMS) - ISO-9001 CERTIFIED
- Tech Support For Life Via. BOSS' In-House Laser Tech's And Engineers
- Warehoused Replacement Parts & Accessories For Quick Replacement
- Warranty - 2 Year Parts Includes Fiber Laser



## SPECIFICATIONS

<b>Cutting Area</b>	59"x118" or 1,500mm X 3,000mm	<b>Z-Drive</b>	Ball screw w/3" movement
<b>Machine Dimensions</b>	185"(L)x131"(W)x95"(H)	<b>Net Weight</b>	6,945lbs. Machine only
<b>Material Platform</b>	Steel saw tooth blade cutting platform	<b>Warranty</b>	Two (2) years includes parts & laser power
<b>Laser Power</b>	1KW, 1.5KW, 2KW, 3KW, 4KW, 6KW. Boss Ion Power Series or Optional IPG	<b>Software Interface</b>	CypCUT plane cutting software
<b>Laser Cooling</b>	Dual temp 42000 chiller	<b>Class</b>	Class 4 laser
<b>Motor Type</b>	AC Servo Motors		