

**60W CO2 LASER TUBE**  
-----**RD Works INCLUDED**  
UPGRADE TO LIGHTBURN LASER SOFTWARE  
-----**INDUSTRY LEADING**  
**2 YEAR**  
**WARRANTY**

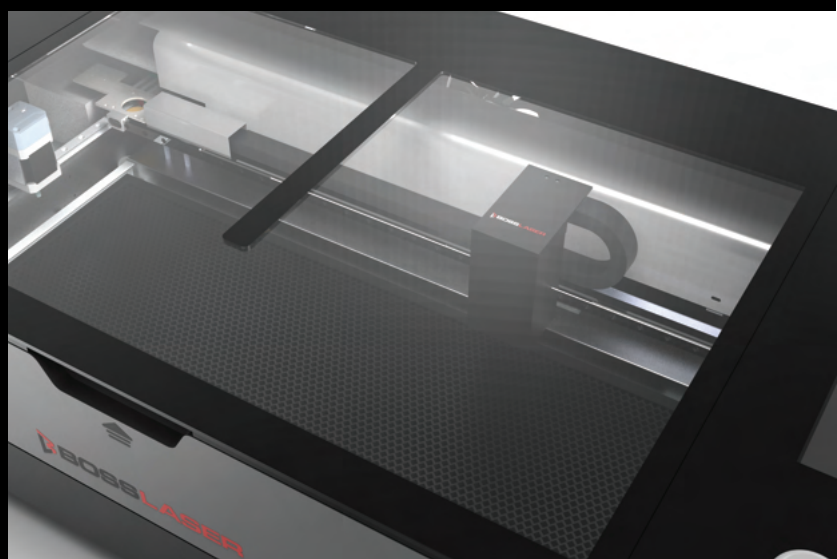
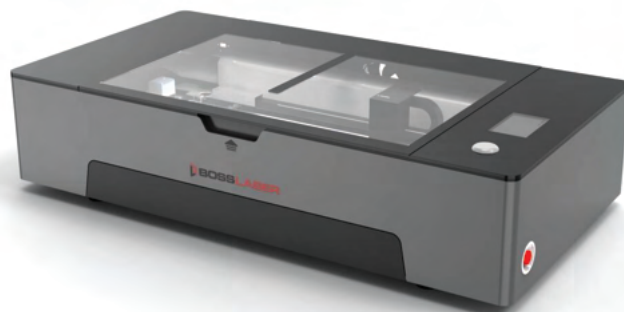
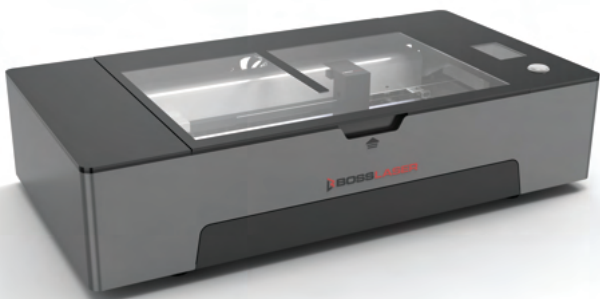
## FEATURES:

Equipped with a 60 watt CO2 laser tube, it delivers 50% more power than comparable models, ensuring efficient and precise operations. Hybrid servo motors enable raster speeds of up to 1,000mm/second, 3x the productivity compared to standard systems.

The spacious 24"x12" work area, complemented by front and rear material pass-through points, accommodates larger projects with ease. An adjustable Z-table offers up to 8" of space, providing 20% more flexibility for taller materials and full size rotary attachments.

## EVO DESKTOP INCLUDES:

- 60 watt CO2 laser tube
- Hybrid Servo Motors
- RD Works Laser Software or upgrade to Lightburn.
- Motorized Z-axis
- 2-way material pass throughs
- Push button focus
- LCD touch screen
- Designed & Engineered In USA By Boss Laser
- Quality Management System (QMS) - ISO-9001 CERTIFIED
- Tech Support For Life Via. BOSS' In-House Laser Tech's And Engineers
- Warehoused Replacement Parts & Accessories For Quick Replacement
- Warranty - 2 Year Parts Includes Fiber Laser



## CUT or ENGRAVE

- ACRYLIC
- WOOD
- FIBER GLASS
- MDF
- FOAM
- LEATHER
- PLASTICS
- CARDBOARD
- FABRIC
- PAPER
- RUBBER

**SPECIFICATIONS**

<b>Cutting Area</b>	24" x 12"	<b>Voltage</b>	110V
<b>Machine Dimensions</b>	42" (L) x 23" (W) x 10" (H)	<b>Frequency</b>	60hZ
<b>Shipping Dimensions</b>	49.5"L X 27.5"W X 17"H	<b>Laser</b>	Class 4 laser
<b>Machine Weight</b>	130lbs	<b>Auto Focus</b>	Yes
<b>Shipping Weight</b>	190 lbs.	<b>Software</b>	RD Works or Upgrade to Lightburn
<b>Shipping Freight</b>	Freight	<b>On Board Memory</b>	128 MB
<b>Machine Movable/Casters</b>	No Casters. Desktop Unit	<b>Camera Availability</b>	SMP Built In
<b>Minimum Opening Dimensions</b>	Standard Doorway	<b>Communication Type</b>	WiFi, USB Cable, Ethernet
<b>Laser Source/Frequency</b>	Glass DC Tube / 10640 Nanometer	<b>Minimum PC Requirements</b>	Windows 10 and up (Lightburn)
<b>Laser Power</b>	60 Watt CO2 Laser Tube	<b>Cooling Method</b>	Built in Water Cooler
<b>Focal Length</b>	2"	<b>Exhaust Size</b>	4"
<b>Max Rotart Engraving Dia. Basic Rot.</b>	6.75"	<b>Fume Extractor Compalibility</b>	FiltbraBox Micro or Larger
<b>Pass Through Height</b>	.25"		
<b>Warranty</b>	2 (Two) Year Limited Warranty		
<b>Max Material Thickness</b>	.59" Standard / 8" With optional elevating feet to accommodate rotary		
<b>Motor Type</b>	Hybrid-Servo		
<b>Transmission Type</b>	Belt Driven with Linear Rails		
<b>Maximum Engraving Speed</b>	1,000mm/second		
<b>Accuracy</b>	+/- 0.004 Inches		