



3KW - 6KW

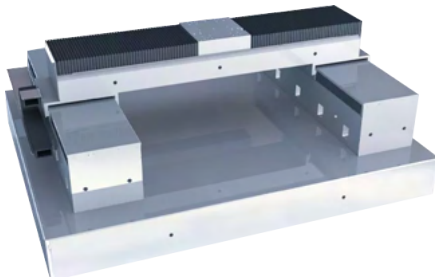
Boss Ion Power Options

CYPCUT LASER SOFTWARE INCLUDED

INDUSTRY LEADING
2 YEAR WARRANTY

Rigid Marble Table

The frame features a marble structure, offering excellent rigidity and high strength. The beam is designed with a lightweight structure, providing strong acceleration capabilities. Precision machining using a CNC gantry milling machine ensures accurate movement.



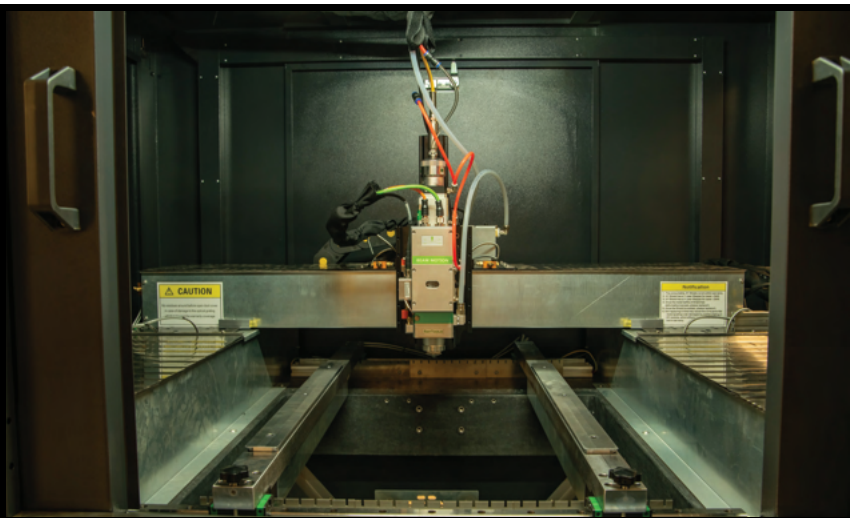
Aviation Aluminum Beam

It features high strength, low weight, excellent corrosion and oxidation resistance, and low density. Even after prolonged operation, the machine maintains its structural integrity without deformation. Significantly boosting processing speed and performance.

Linear Motor Drive with High Control Accuracy

A drive system based on electromagnetic induction converts electrical energy into linear motion, enabling precise reciprocating movement. It offers superior dynamic performance, enhanced control accuracy, higher feed speeds, faster acceleration, and extended service life.





SPECIFICATIONS

Cutting Area	X=24", Y=24", Z=3"	Z-Drive	Laser head up/down 3"
Motor Type	Fuji servo motors	Rated Throughput/ Output Capacity	Up to 48 m/min (157.5 ft/min)
Tolerance Ranges	±0.03 mm (±0.0012 in)	Warranty	Two (2) years includes parts & laser power
Laser Power	3KW - 6KW Boss Ion Power Options	Software Interface	CypCut
Power Consumption	6-12 kW (based on laser configuration)	Class	Class 4 laser
Electrical protection rating	IP54	Material Platform	Pneumatic clamp
Power Requirements	220V-240V, 3 phase 220V single phase also available	Required Air Pressure & Flow Rate	90-145 psi (6.2-10 bar)
Control Voltage	24V DC	Venting Attachments	Air exhaust fans w/ venting pipe
Product Dimensions	57.75"L x 75.5"W x 79.75"H in)	Machine Weight	Aprox. 6,614 lbs.